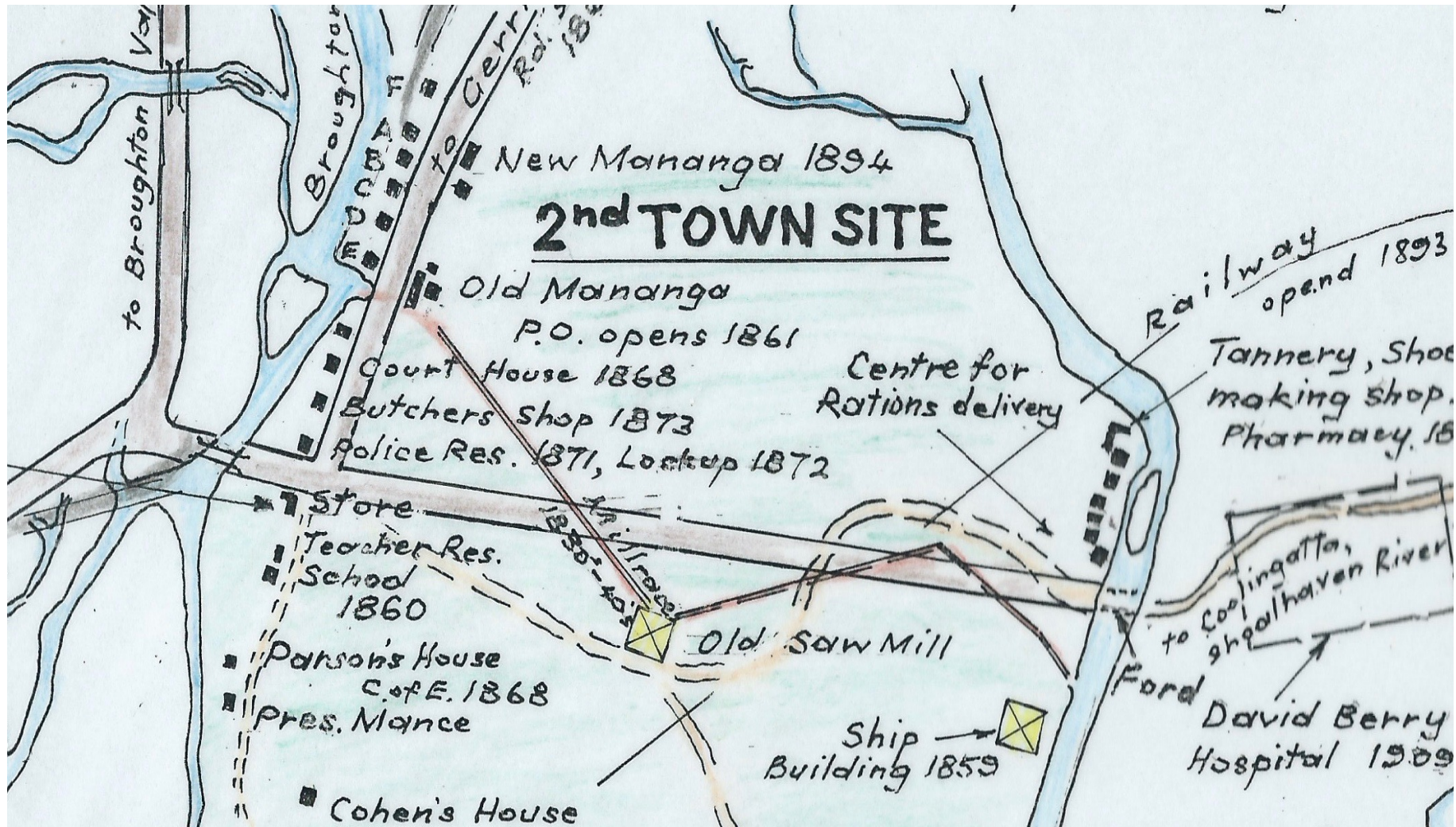
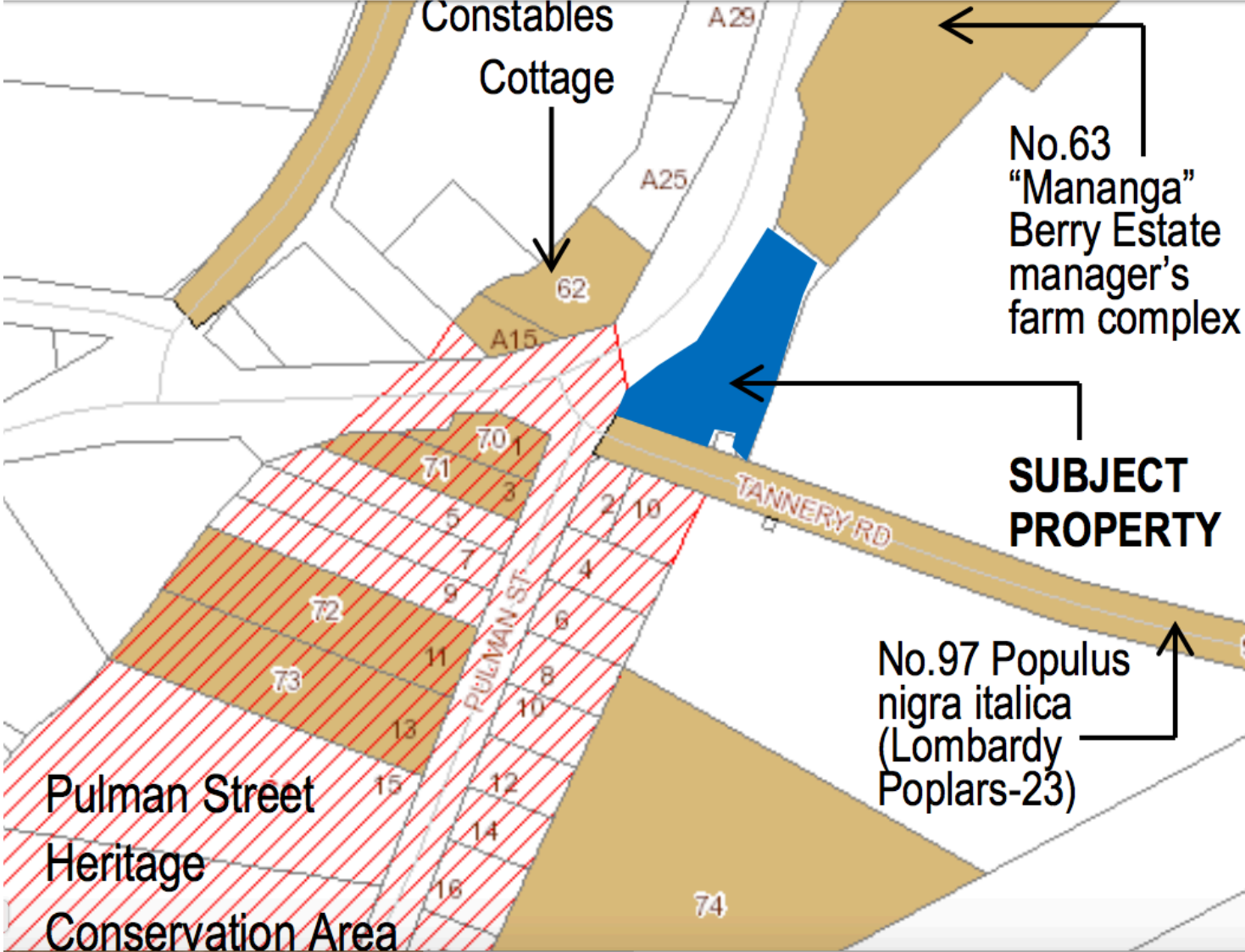


Historic Berry 1830s >

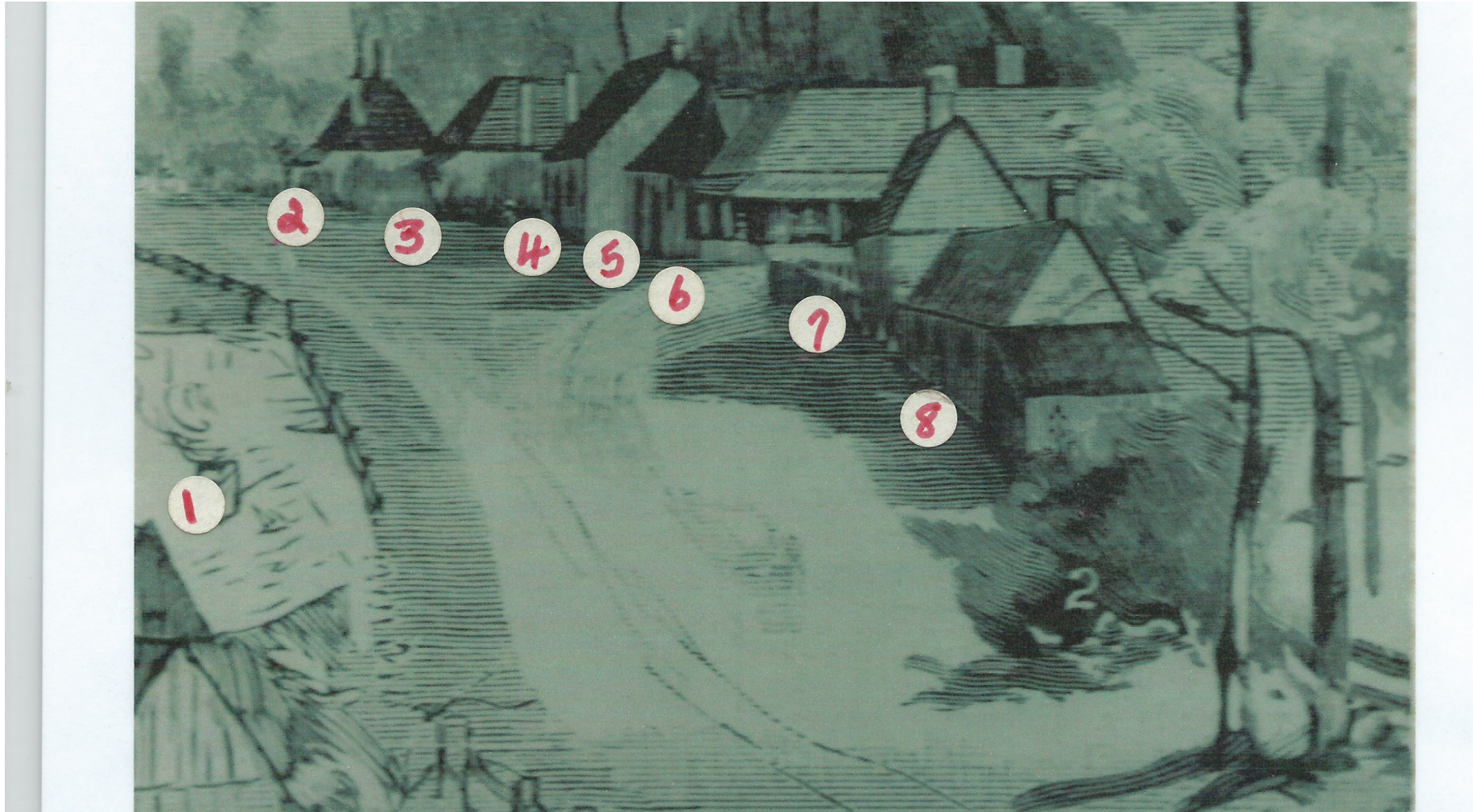


Heritage Areas





Pulman Street 1870s



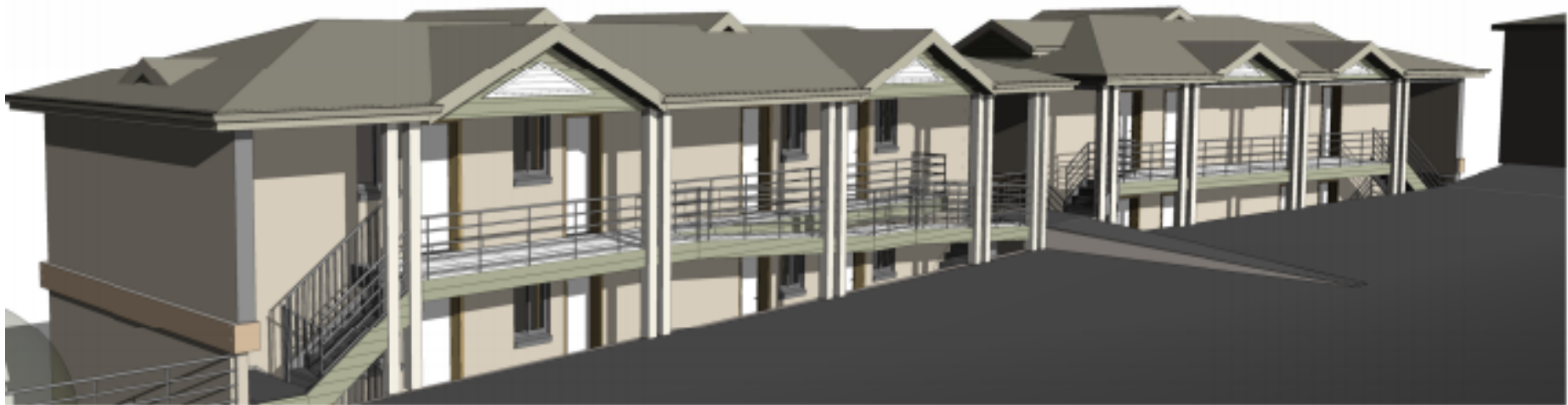
Early Sketch of Pulman St & Highway

1. Post Office 1861
2. C. of E. Minister's Rectory 1869
3. Presbyterian Minister's Manse 1878
4. School-house 1860 – 1884
5. School Master's residence
6. Store 1877 – 1892
7. Police Constable's residence 1871
8. Court House and Lock-up 1868

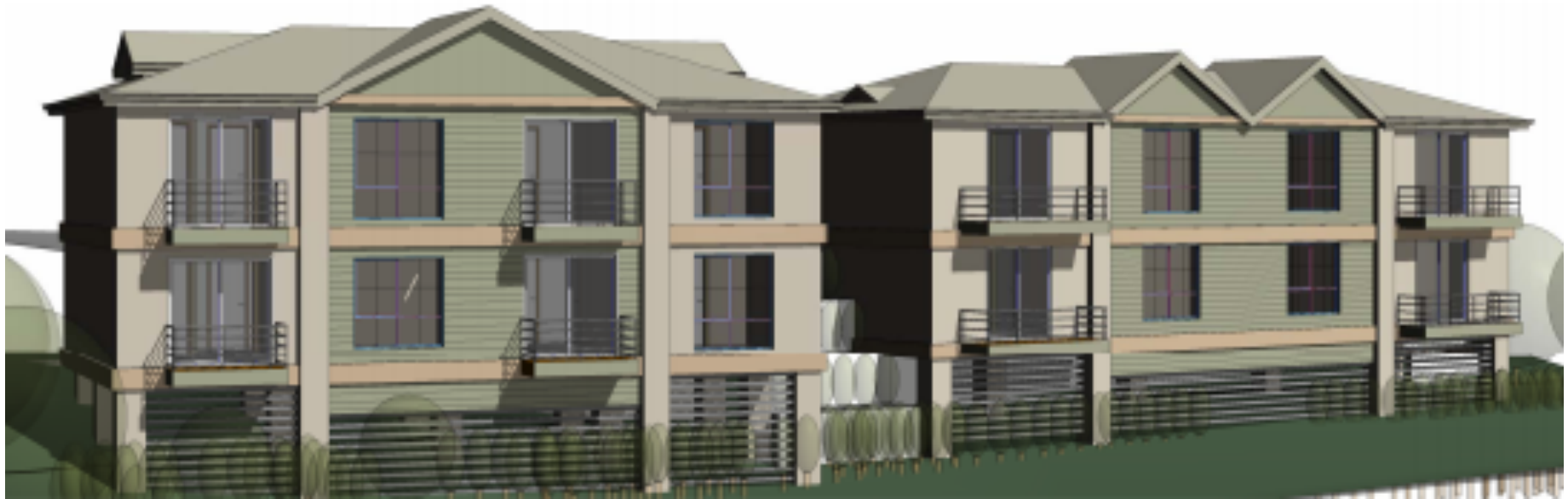
Wilson's Store 1877



Development from Highway



Development from Tannery Road



Historical Society Submission

- The site is the gateway to a town steeped in history and unique to the South Coast
- The development is based on lowest cost
- The plans bear no 'heritage ' characteristics
- Visitors to 'Historic Berry' will be greeted with a 1950s looking edifice
- The developer is exploiting the historic character of Berry with a cheap facade to maximise his return

Council Assessment

- “Like the Forum, we also value the significance of gateway sites and this will be a critical element in our assessment.”
- 78 submissions received objecting to the proposal
- Council’s Heritage Advisor supports the proposal, stating “ the heritage significance of each of the items is not adversely impacted by the proposed development.”